

6 AS 800 TO ZF-ASTronic lite (Truck)

Automatic transmission system for mid-range trucks



6 AS 800 TO - Basic transmission
6 AS 805 TO - Transmission with clutch-dependent PTO

| | |
|---|--|
| Transmission type | 6 AS 800 TO |
| Input torque | max. 850 Nm |
| Weight* | ≈ 140 kg |
| Oil capacity for standard installation | ≈ 9.8 dm ³ |
| Oil grade | as specified in ZF List of Lubricants TE-ML 02 |
| Clutch bell housing | SAE2, integrated |

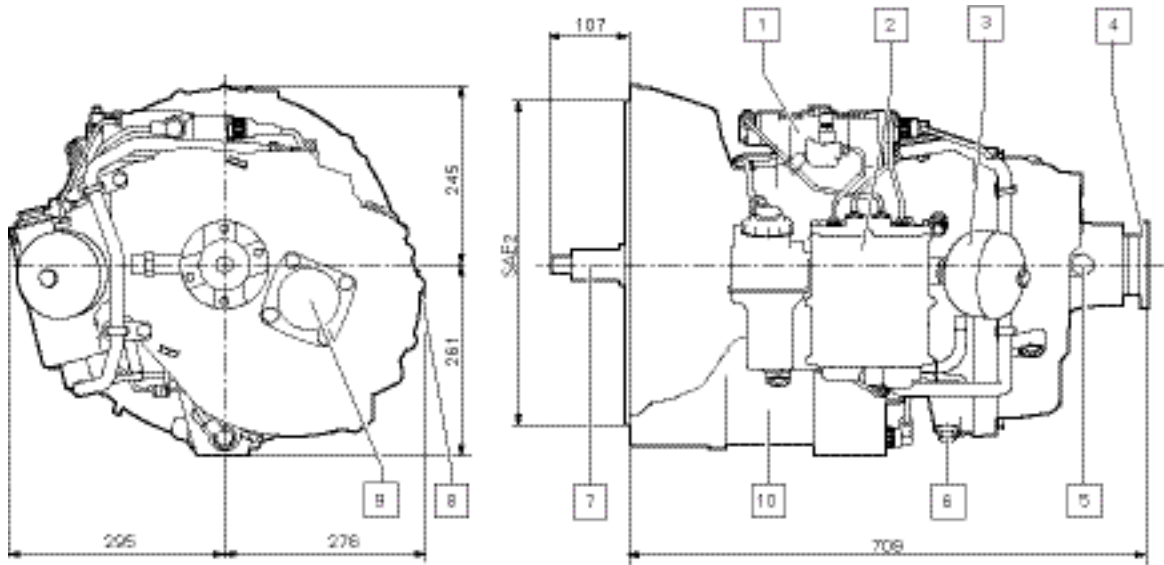
*without transmission fill and ancillary equipment, incl. oil fill of automating system

Standard ratios in gear

| | | | | | | |
|----------|----------|----------|----------|----------|----------|----------|
| 1 | 2 | 3 | 4 | 5 | 6 | R |
| 6.58 | 3.60 | 2.13 | 1.39 | 1.00 | 0.78 | 6.06 |

6 AS 800 TO

Installation dimensions



- | | | | |
|---|--|----|---|
| 1 | Transmission actuator | 6 | Oil drain |
| 2 | Powerpack with integrated transmission control (electronic control unit) | 7 | Input shaft, profile SAE C10 |
| 3 | Diaphragm accumulator | 8 | Oil fill and oil overflow check |
| 4 | Output | 9 | Connection point for clutch-dependent PTO |
| 5 | Speedo sensor | 10 | Clutch actuator |